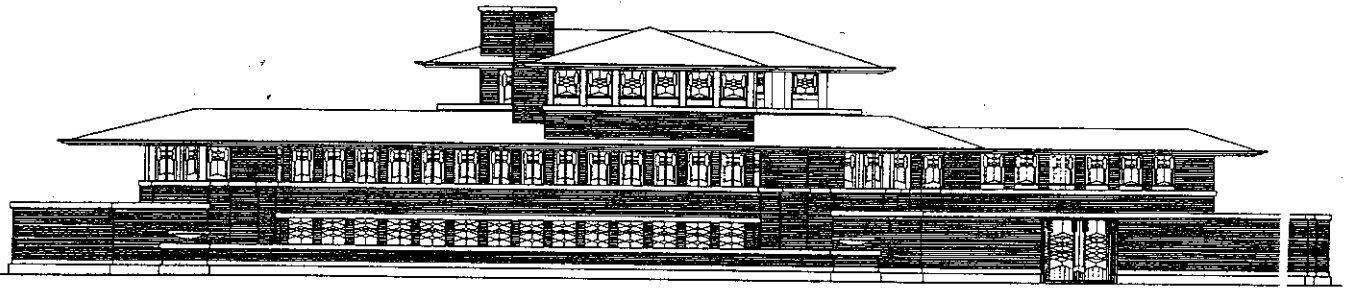


PRAIRIE



# PRAIRIE

1900-1920

Style developed in Chicago by architect Frank Lloyd Wright.

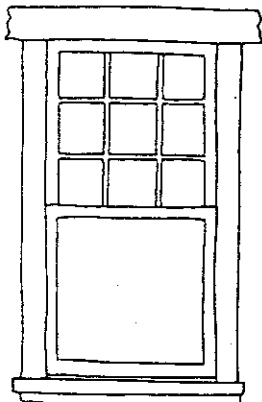
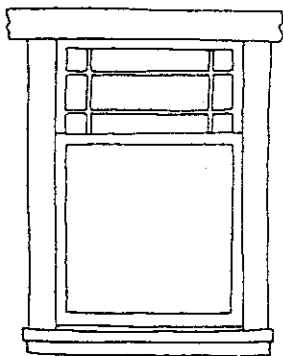
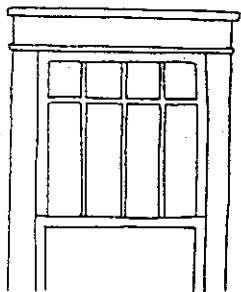
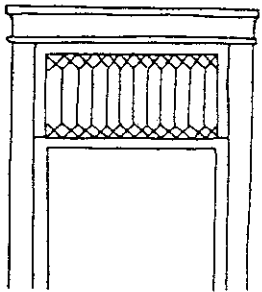
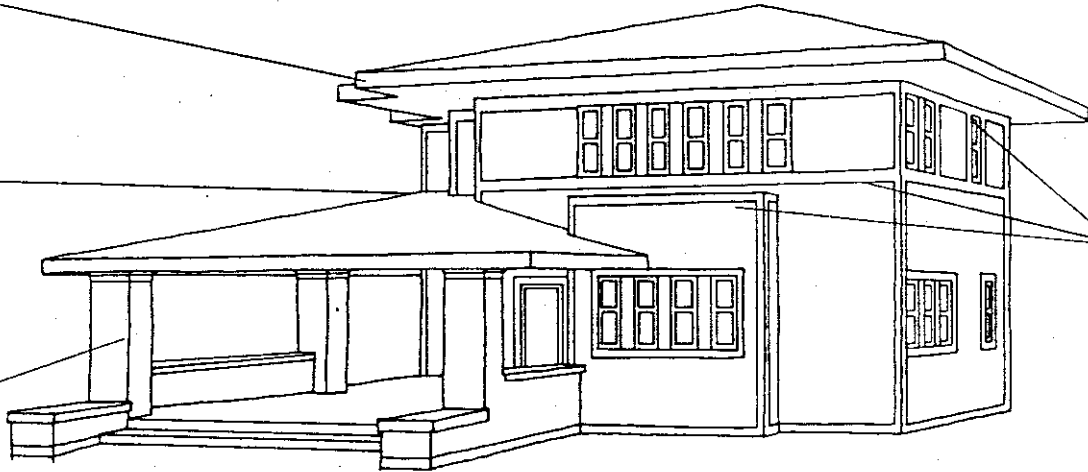
- low, long buildings
  - gently sloping roof
  - walls are light-colored brick
  - stained glass windows with square, circles, lines, or flowers & leaves
- (examples: COURTHOUSE AND EVERIST HOUSE)

low-pitched roof  
with widely  
overhanging eaves

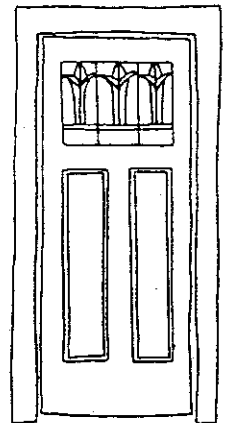
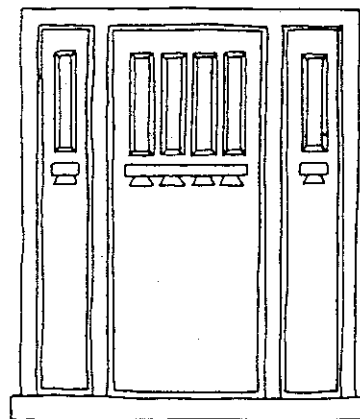
two stories with  
one-story porches  
or wings

massive square  
porch supports

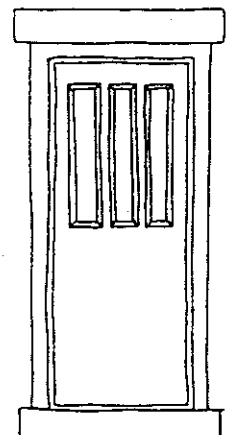
detail emphasizing  
horizontal lines



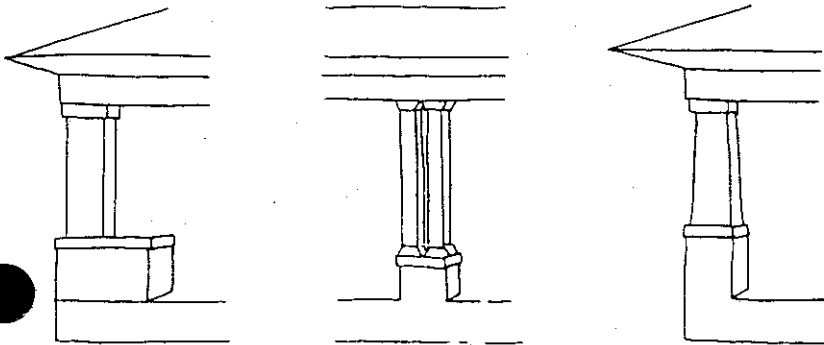
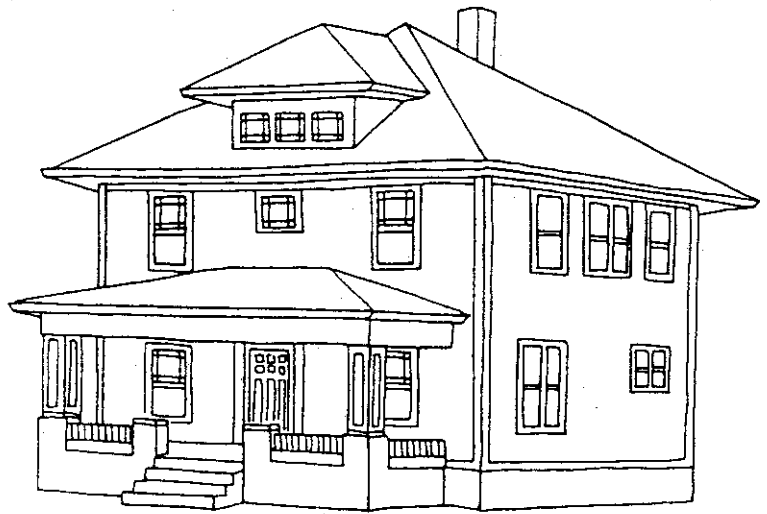
Windows



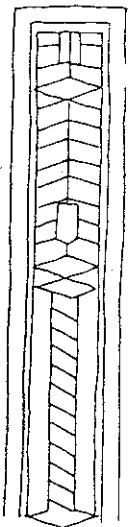
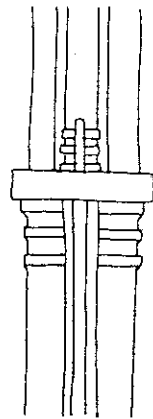
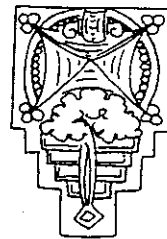
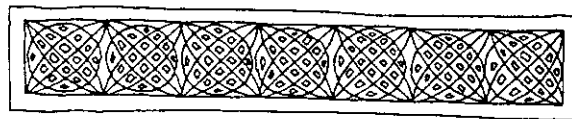
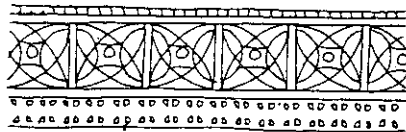
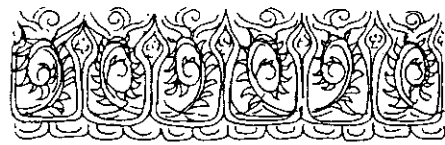
Common Front Doors



# PRAIRIE

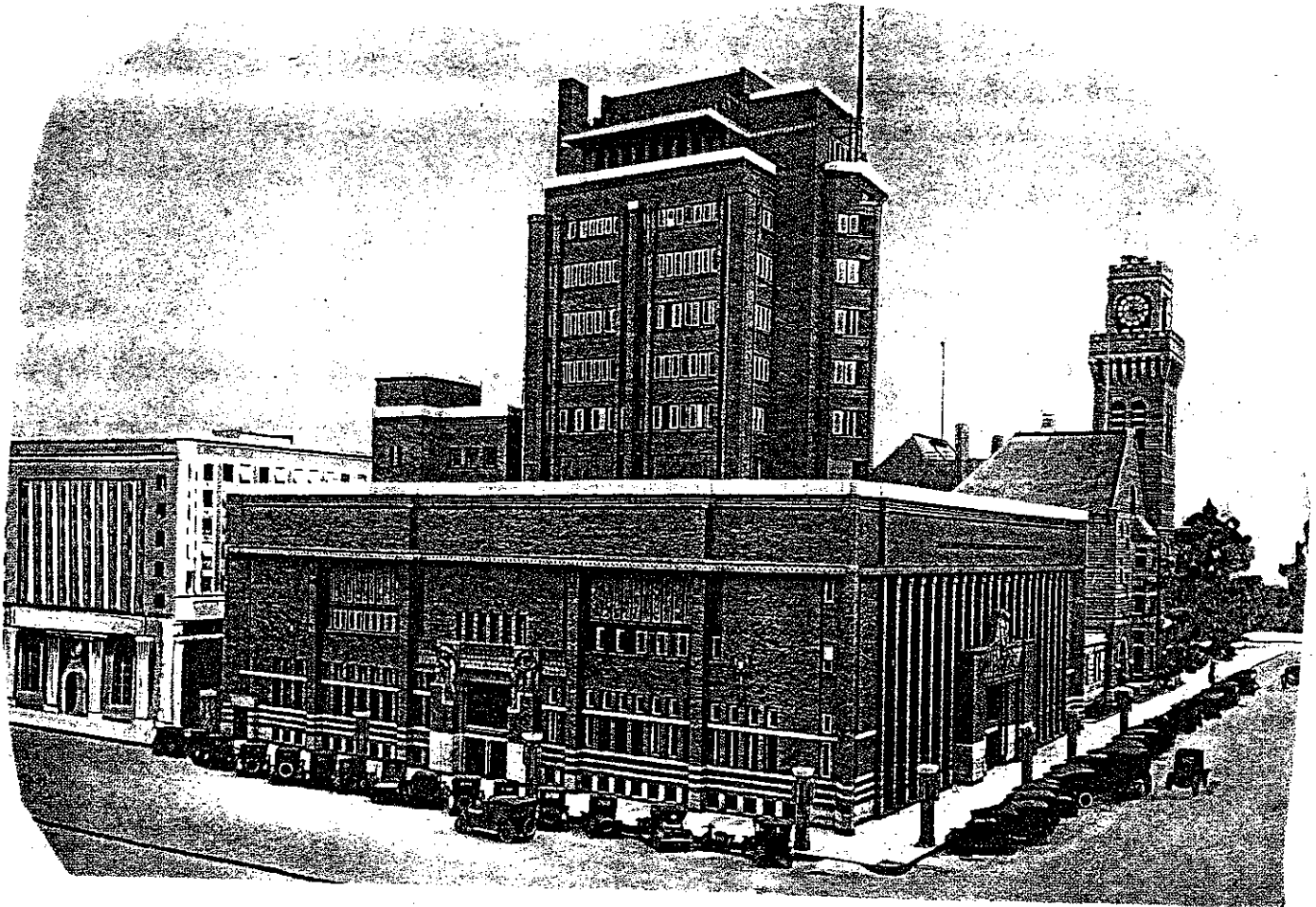


Porch Columns



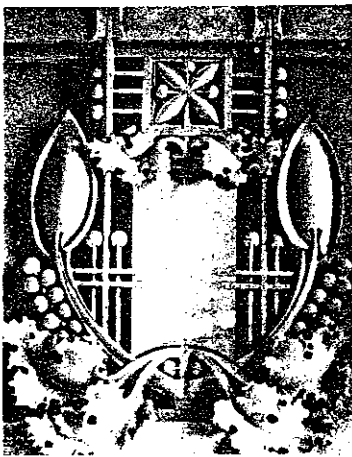
Decorations

# PRAIRIE



WOODBURY COUNTY COURT HOUSE

W. L. STEELE, Architect.



Terra Cotta Decorations  
("cooked earth")

