

CRAFTSMAN



# CRAFTSMAN

1905-1930

- roof beams and rafters exposed under the eaves
- gently sloping roof
- short, square porch columns

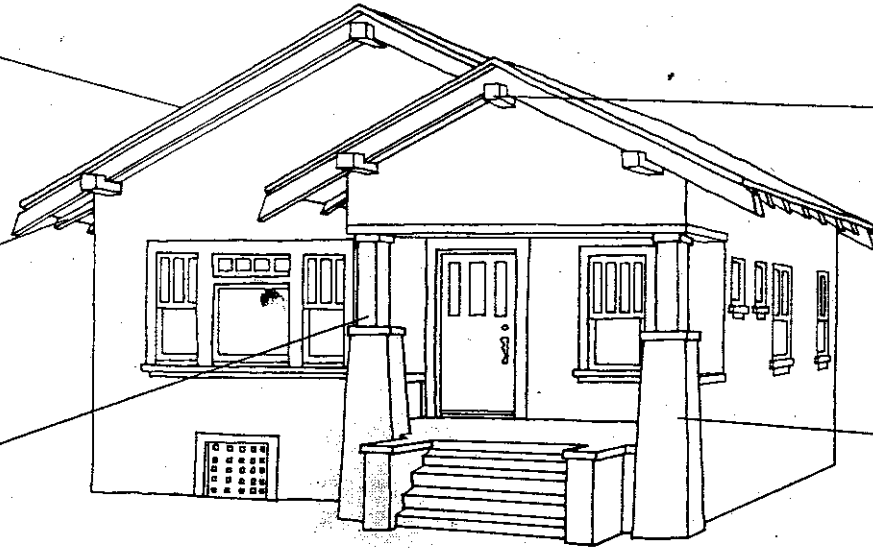
low-pitched gabled roof (occasionally hipped) with wide, unenclosed eave overhang

roof rafters usually exposed

porches, either full- or partial-width, with roof supported by square columns

decorative (false) beams or braces under gables

columns or column bases frequently continue to ground level (without break at level of porch floor)

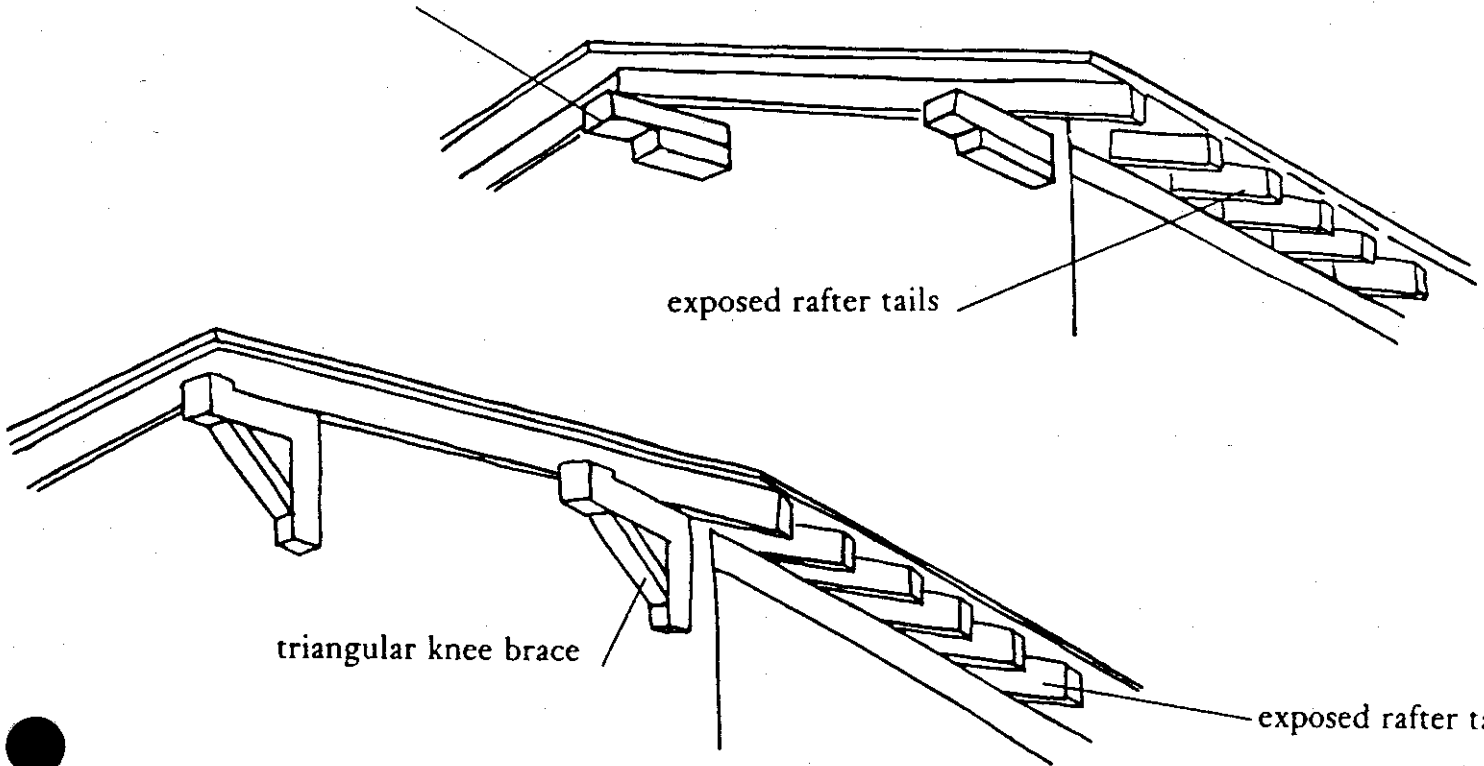


exposed roof beams

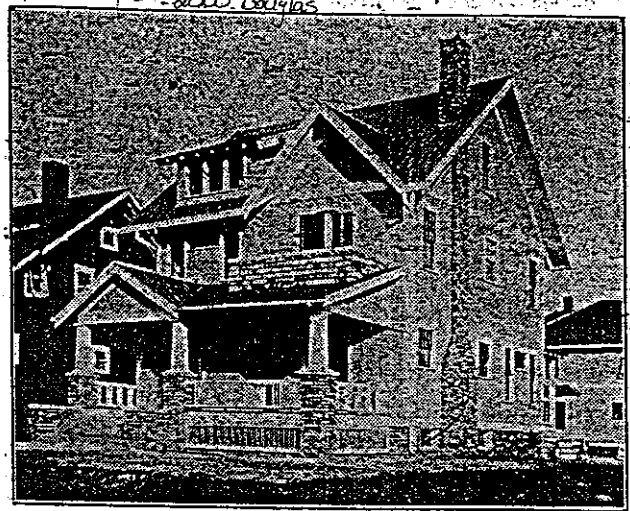
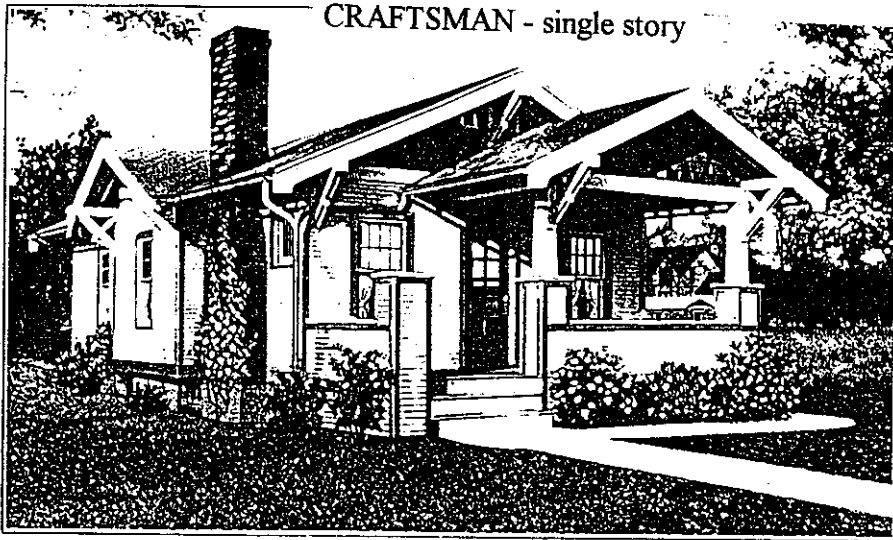
exposed rafter tails

triangular knee brace

exposed rafter tails

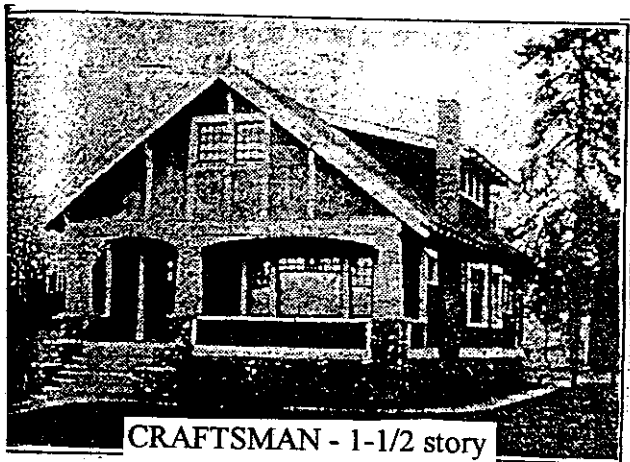


CRAFTSMAN - single story



CRAFTSMAN - 2-story

note: this residence is located at 2000 Douglas Street



CRAFTSMAN - 1-1/2 story