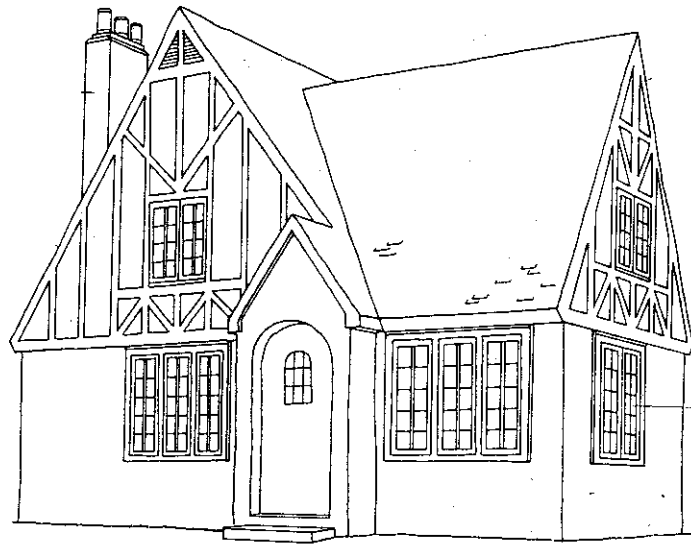


TUDOR REVIVAL

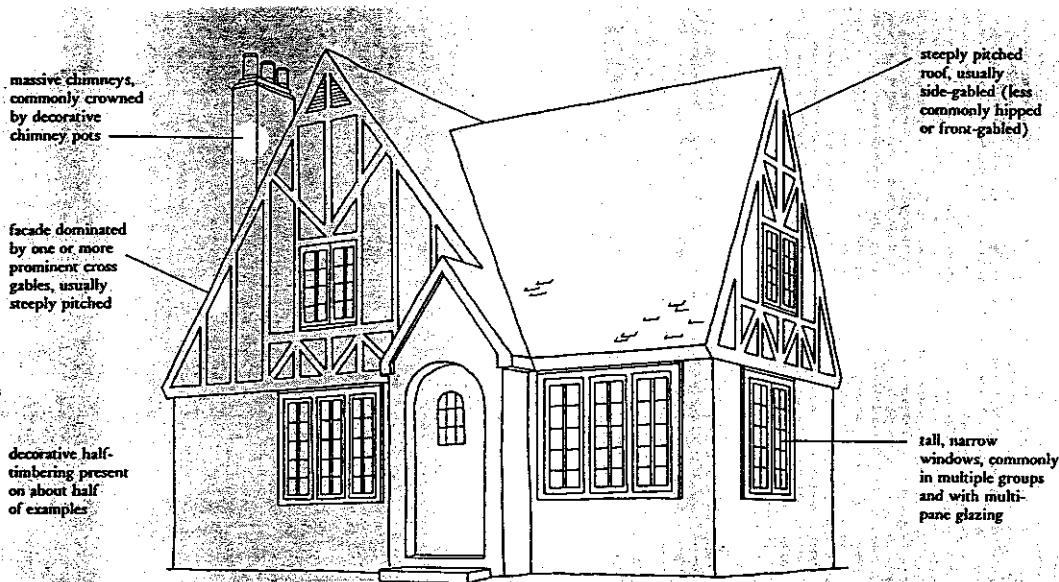


TUDOR REVIVAL

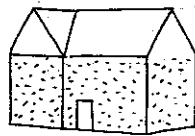
1890-1940

This style is based on a variety of Medieval English architecture that ranges from the thatch-roof cottage to the grand manor house. Although present in the United States during the late 19th century, the Tudor Revival style exploded in popularity during the 1920s and 1930s.

- Steeply pitched roof.
- Decorative half-timbering.
- Tall, narrow windows, usually with multiple pane glazing.
- Massive chimneys commonly crowned with chimney pots.
- Walls are commonly stucco, brick, stone or wood.

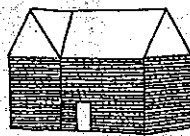


STUCCO WALL CLADDING



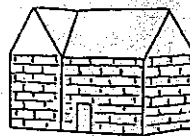
pages 360-1

BRICK WALL CLADDING



pages 362-5

STONE WALL CLADDING



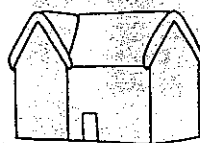
pages 366-7

WOODEN WALL CLADDING



page 368

FALSE THATCHED ROOF



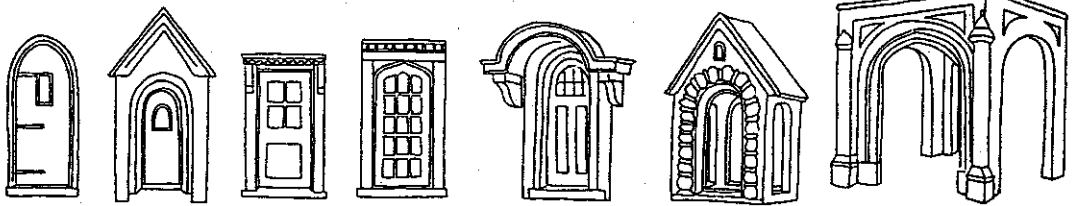
page 369

PARAPETED GABLES



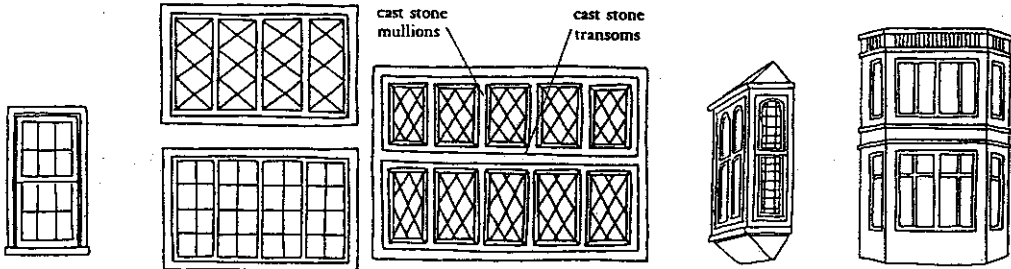
pages 370-1

PRINCIPAL SUBTYPES



TYPICAL ENTRANCES

entry porches



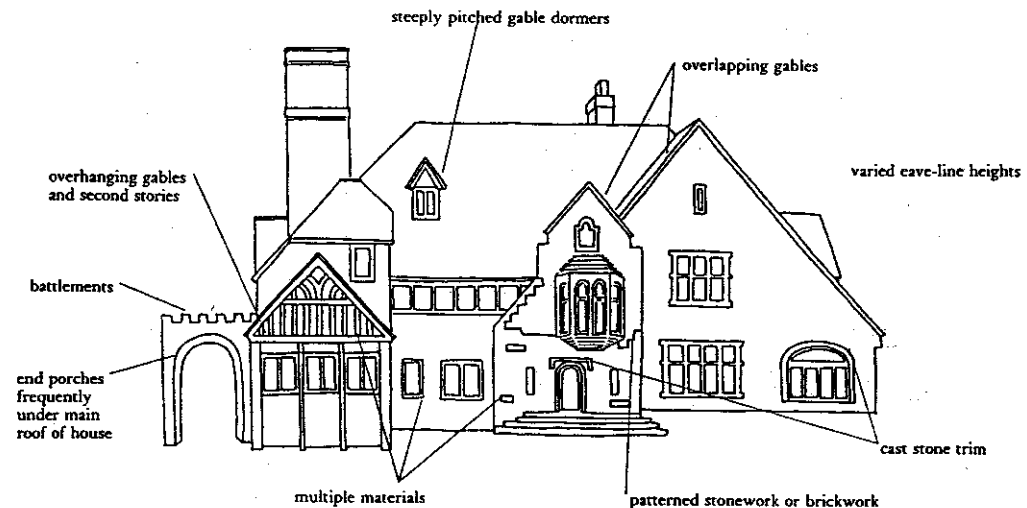
double-hung

casement

oriel

semi-hexagonal one-and two-story bays

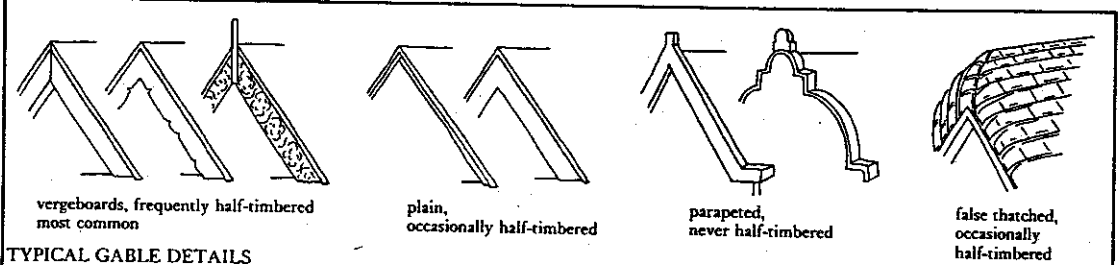
TYPICAL WINDOWS



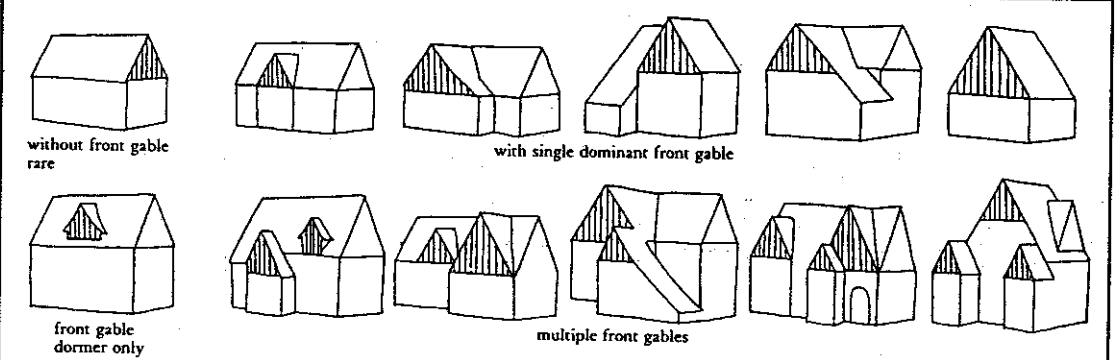
TYPICAL ELABORATIONS



STRAPWORK



TYPICAL GABLE DETAILS

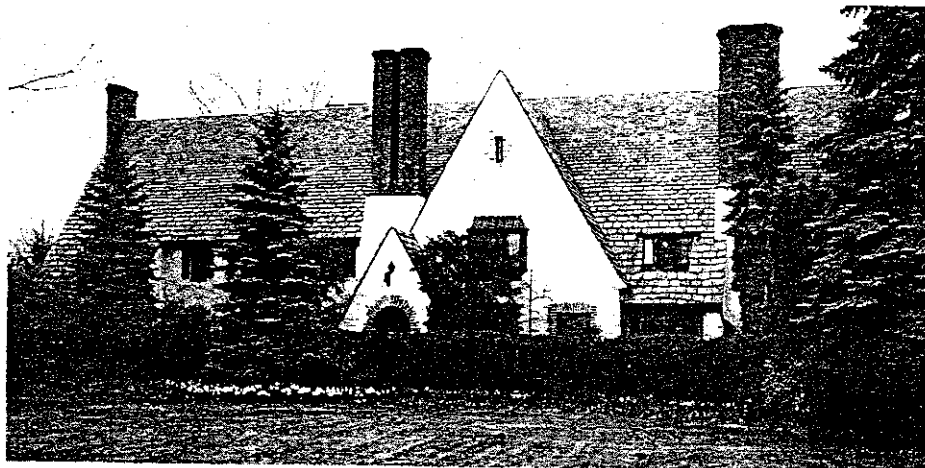


SOME ROOF VARIATIONS

PLACEMENT May have more than one	TYPICAL ELABORATIONS	LOCATION	TYPICAL PATTERNS infill usually stucco, but occasionally brick
<p>front</p>	<p>chimney pots, round or octagonal, sometimes decorated</p>	<p>in gable</p>	
<p>end</p>	<p>multiple shafts representing flues for different fireplaces, usually fake</p>	<p>in second story</p>	
<p>internal</p>	<p>patterned brickwork or stonework</p> <p>chimney is usually very tall</p>	<p>in first story rare</p>	

CHIMNEYS

HALF-TIMBERING



TUDOR REVIVAL