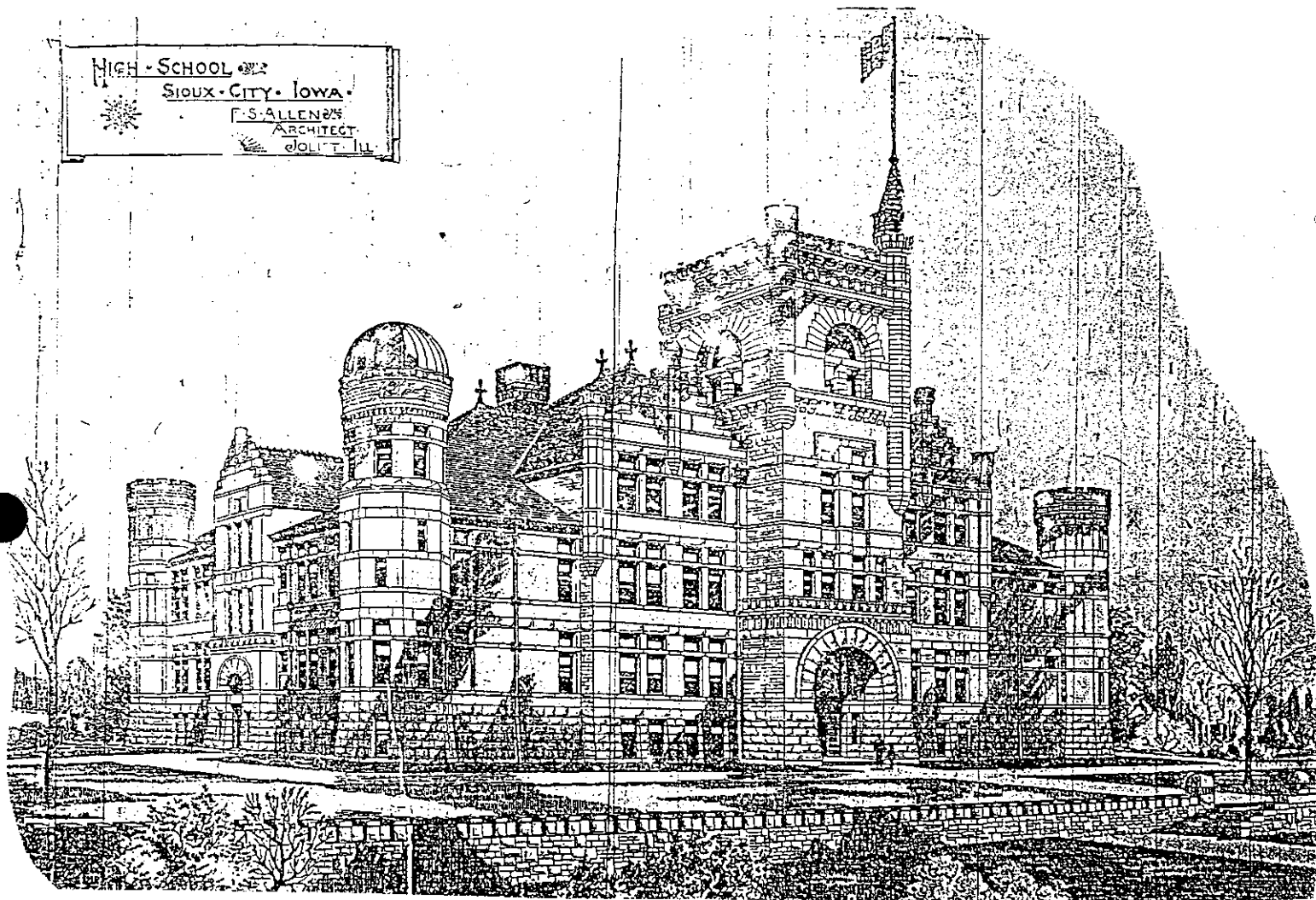
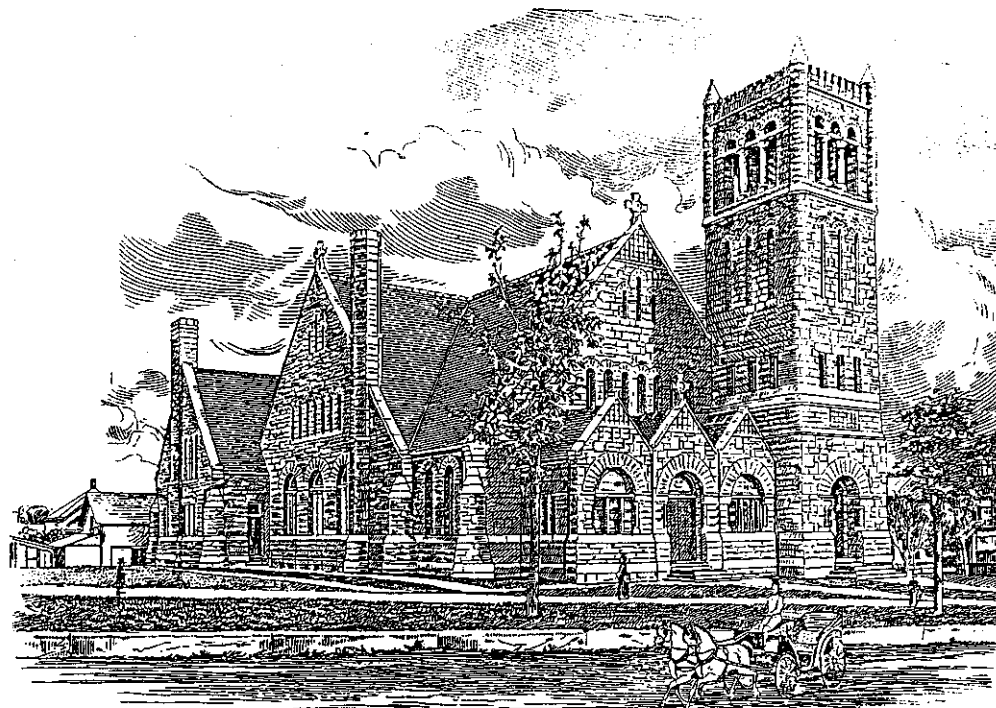


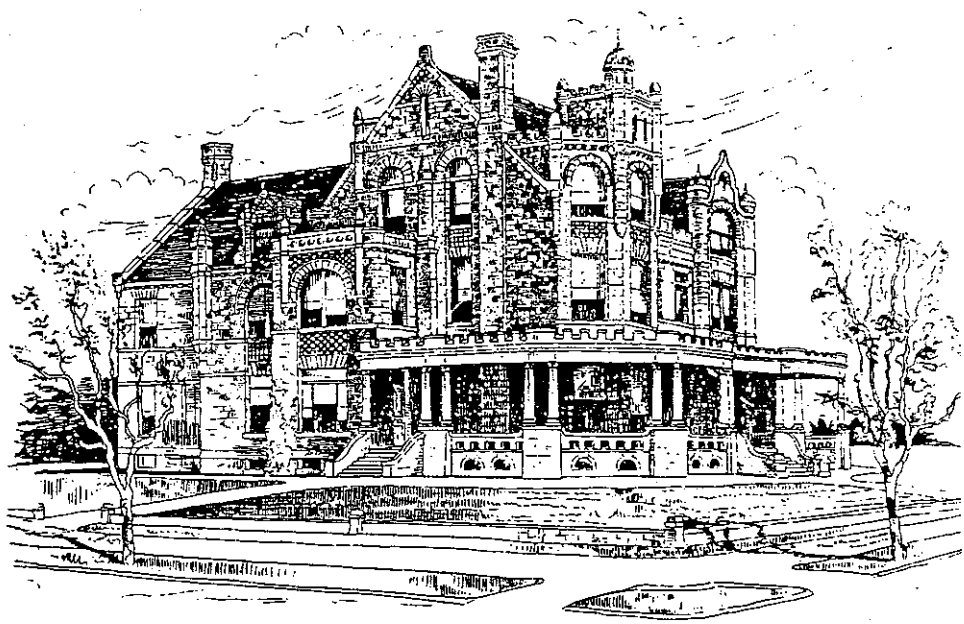
# RICHARDSONIAN ROMANESQUE



# RICHARDSONIAN ROMANESQUE



ST. THOMAS EPISCOPAL CHURCH.  
Twelfth and Douglas Streets.



# RICHARDSONIAN ROMANESQUE

1870-1900

Named for H.H. Richardson, Pennsylvania architect who began this design. It reminds us of English castles. It is the style favored by churches, schools, courthouses, train stations, and some houses.

- stone buildings with rough, bumpy feel
- arches
- towers with battlements
- some stones carved with flowers, leaves, or animals

(examples: CASTLE ON THE HILL & SIOUX CITY PUBLIC MUSEUM)

